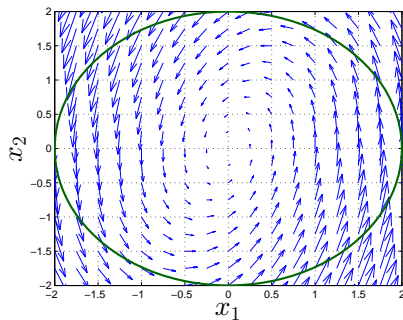


On Estimating the Control Invariant Set

Dongkun Han

Technical University of Munich

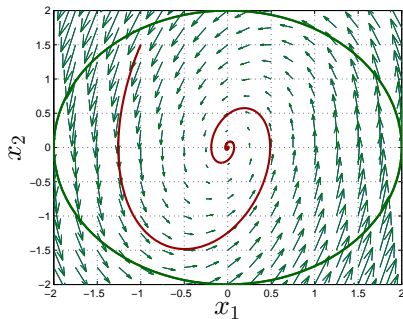
Details



■ Significance

Figure: Definitions illustration.

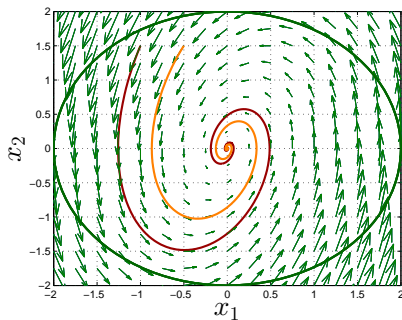
Details



■ Significance

Figure: Definitions illustration.

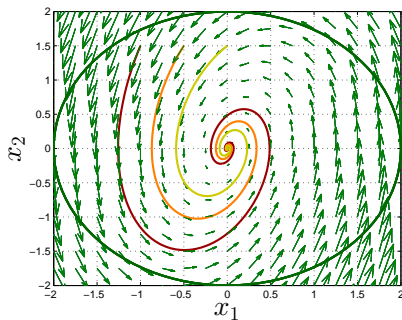
Details



■ Significance

Figure: Definitions illustration.

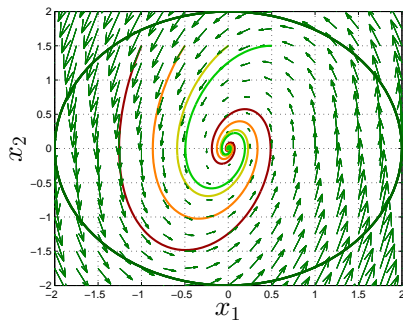
Details



■ Significance

Figure: Definitions illustration.

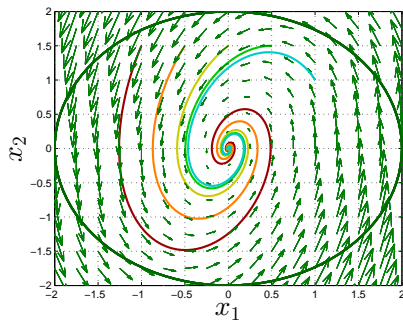
Details



■ Significance

Figure: Definitions illustration.

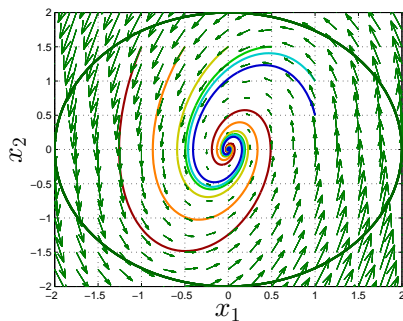
Details



■ Significance

Figure: Definitions illustration.

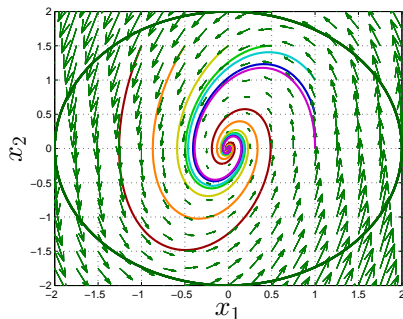
Details



■ Significance

Figure: Definitions illustration.

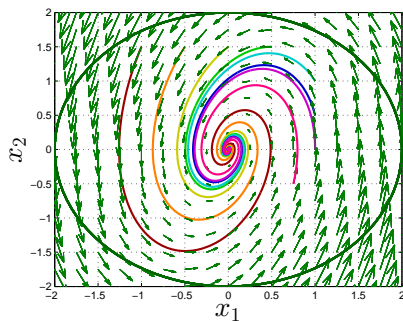
Details



■ Significance

Figure: Definitions illustration.

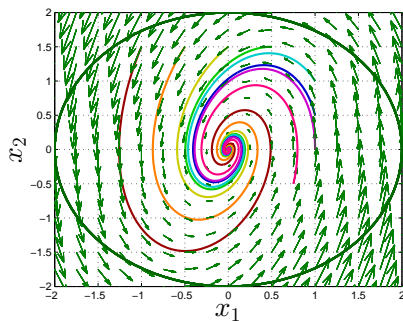
Details



■ Significance

Figure: Definitions illustration.

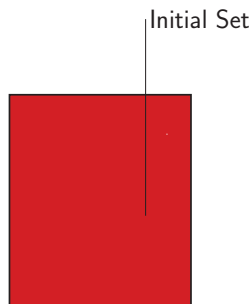
Details



- Significance
- Possible directions

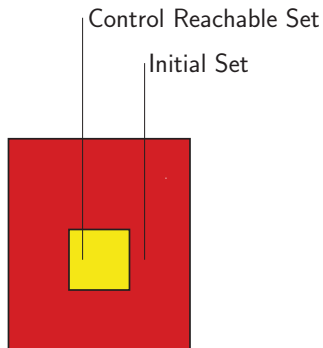
Figure: Definitions illustration.

Details



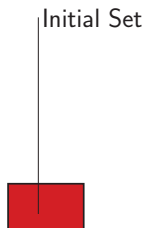
- Significance
- Possible directions
- Reachable set methods

Details



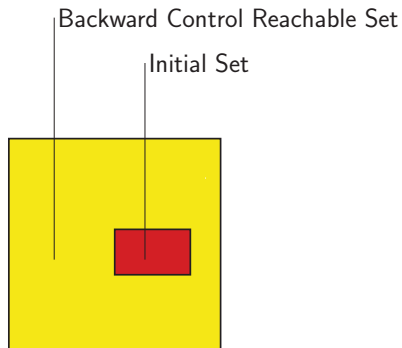
- Significance
 - Possible directions
- Reachable set methods

Details



- Significance
 - Possible directions
- Reachable set methods

Details



- Significance
 - Possible directions
- Reachable set methods

Details

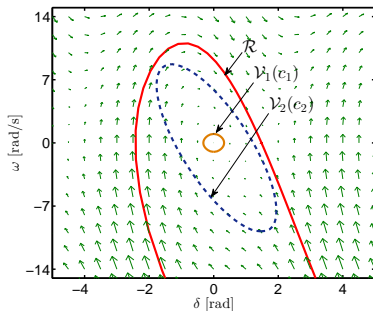


Figure: Sublevel set of LF.

- Significance
- Possible directions
- Reachable set methods
- Sublevel set methods

Details

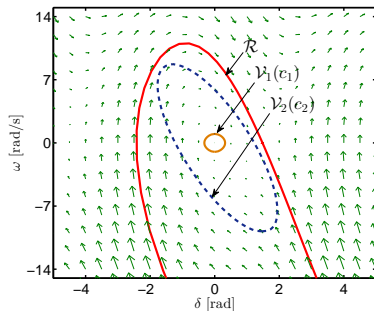
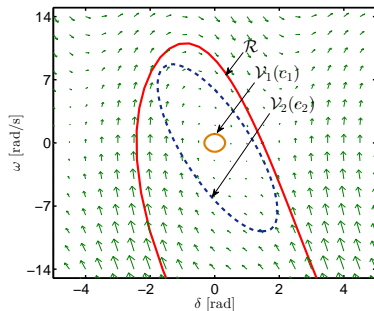


Figure: Sublevel set of LF.

- Significance
 - Possible directions
- Reachable set methods
Sublevel set methods
Methods comparison

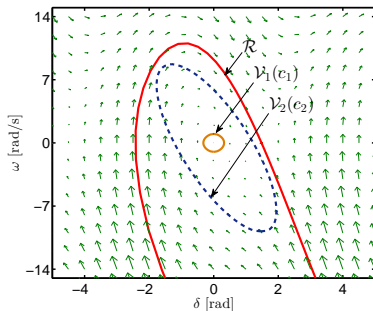
Details



- Significance
- Possible directions
- Tools

Figure: Sublevel set of LF.

Details



- Significance
 - Possible directions
 - Tools
- Zonotopic approximation

Figure: Sublevel set of LF.

Details

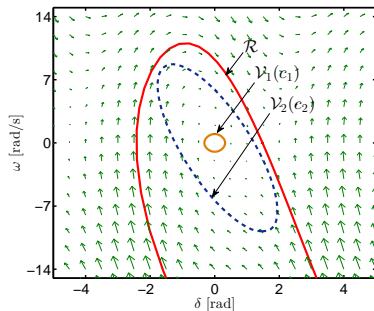


Figure: Sublevel set of LF.

- Significance
- Possible directions
- Tools
 - Zonotopic approximation
 - Semi-algebraic programming